

Ezi 65 Ali

Aluminium Roller Shutter



**EZI-ROLL SHUTTERS | AUSTRALIAN LEADERS
QUALITY | INNOVATION | DESIGN**

The Ezi 65 Ali is an aluminium roller shutter manufactured by Ezirroll Doors Australia and forms part of the Ezirroll aluminium security door range. The interlocked slat curtain is specifically designed from aluminium extrusion to provide an attractive appearance without compromising door security.

The Ezi 65 Ali is suitable for applications such as retail shopfronts, arcades, sporting complexes, clubs, bars and counter tops. The door curtain can be slotted to create a different design or increase ventilation where necessary. Slotted curtains can be manufactured on request with a clear polycarbonate backing panel to ensure the prevention of foreign particle entry. The Ezi 65 Ali can be supplied in a vast range of sizes and colour finishes.



HISTORY

Ezi-roll Doors Australia has been manufacturing roller shutters and grilles since 1971. Since its inception has been continuously developing its suite of products in both design and manufacturing efficiencies. The **Ezi 65 Ali** aluminium roller shutter is one example and it is featured below.

RECOMMENDED APPLICATION

The **Ezi 65 Ali** is suitable for openings ranging from 1m - 4m high and up to 6m wide. This flat slat shutter is ideal for applications requiring a high level of security while remaining attractively contemporary. Suitable applications are shopping centre shopfronts, arcades, sporting complexes, clubs, bars and counter tops.

THE SECURITY DOOR

The **Ezi 65 Ali** is constructed from high density aluminium extrusions ensuring maximum door strength. The aesthetics and ventilation of the door may be improved for retail shopfront applications by utilising the slotting option. Where slotting is requested for aesthetics only, a clear polycarbonate backing panel can be supplied for each interlocked slat within the curtain. Alternative aluminium slats are fitted with nylon moulded end clips to reduce friction and lateral movement. The **Ezi 65 Ali** is supplied standard in a clear anodised finish (Matt Natural) however aluminium components may be powder coated as an optional extra.

VERSATILE TRACKING SYSTEM

The 50mm x 30mm aluminium door tracks can be mounted between fix or behind fix. The guides can also accommodate a rubber twin fin extrusion or mohair felt buffer to ensure a quieter operation. All manual doors are fitted with door stops.

LOCKING

The **Ezi 65 Ali** may be fitted with a centrally mounted locking mechanism within the mid rail at approximately 900mm above floor level or alternately within the bottom rail. The locking mechanisms are generally concealed behind extruded polycarbonate covers for aesthetics and tamper proofing. Locking is not recommended for motorised doors.

MANUAL/AUTOMATIC OPERATION

The **Ezi 65 Ali** can be manually or electrically operated. There is a range of electric motors available depending on application and usage.

SPRING ASSISTED DRUM ASSEMBLY

The spring assisted counterbalanced roller drum is fabricated from high quality steel spiral ducted tube or spiral welded tube. The central shaft carries helical springs to ensure a smooth and effortless operation.

BOTTOM RAIL

The **Ezi 65 Ali** is supplied with a sturdy T-Rail aluminium bottom rail which provides additional strength to the door. This bottom rail may be supplied with an optional weather seal to prevent the unwanted entry of foreign particles.

WARRANTY

A 12 month limited material, labour and workmanship warranty applies to the **Ezi 65 Ali**.

ARCHITECTURAL SPECIFICATION

Proprietary Item: Ezi-roll "Aluminium Roller Shutter" Ezi 65 Ali or equal approved. Refer to drawings for locations.

Door Curtain: 65mm x 1.6mm Aluminium extrusion. Alternative aluminium sections are fitted with nylon end clips to reduce friction. Running in 50mm x 30mm extruded guides. Clear Anodised or Powdercoat finish.

Size: For openings up to 4m high and 6m wide up to a maximum of 16m².

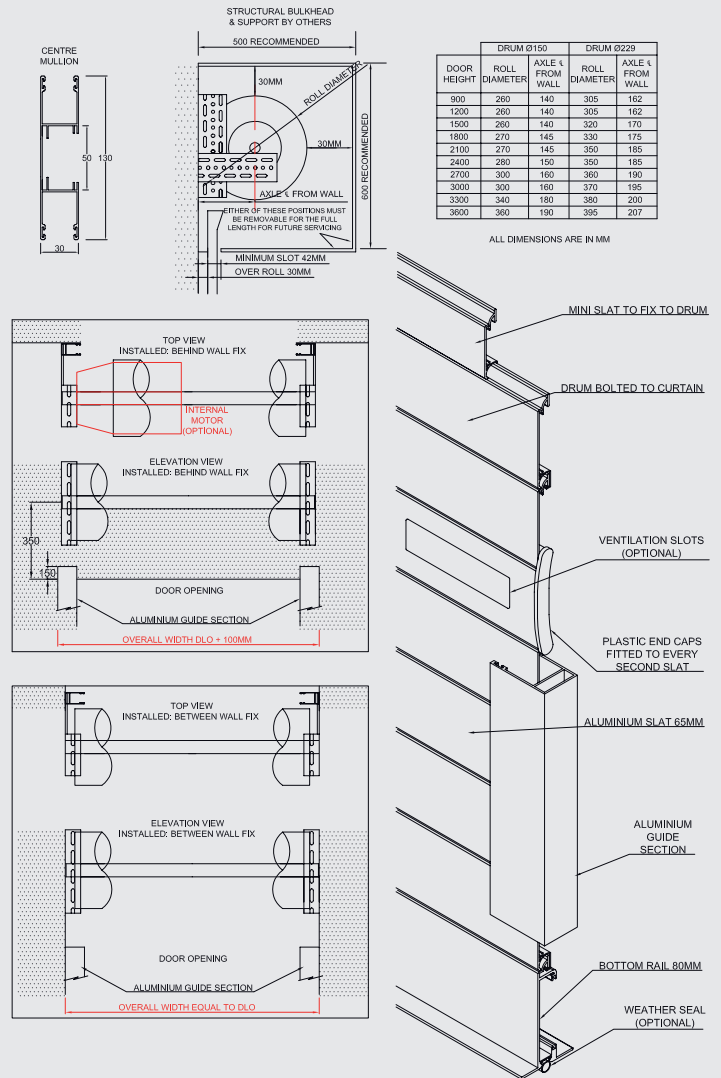
Slotting: Provide 95mm x 25mm vent slots at 70mm spacing as required in the roller shutter. Slotting may include polycarbonate backing panel to reduce foreign particle entrance.

Roller Drum: 148mm or 229mm Spiral drum rotating on a heavy duty shaft fitted with helical springs to counterbalance the door in accordance with the manufacturers specifications.

Operation: Roller Shutter can be either manually operated or motorized depending upon size requirements.

Ventilation: The slotting will provide a maximum of 22% free air flow per lineal meter of slat.

TECHNICAL DETAIL



DISTRIBUTED BY



HEAD OFFICE

Unit 16/50 Parker Ct
Pinkenba QLD 4008
Ph: +61 7 3260 1080
Fax: +61 7 3260 1027
email: sales@eziroll.com.au

VICTORIA

26 Randor Street
Campbellfield VIC 3061
Ph: +61 3 9357 0749
Fax: +61 3 9357 6988
email: vic-sales@eziroll.com.au

ABN 96 132 559 105

www.eziroll.com.au

✓ Service and Value for Money... We Guarantee It!

DISCLAIMER

Ezi-roll Doors Australia reserves the right to alter and or improve its products or any accessories at any time without notice and without incurring any obligation to make similar improvements to products previously ordered or sold.