



Storm•Safe™

Superior Protection built for your Garage Door

Why Storm•Safe™?

- Patented & exclusive Guide-Lok™ safety technology
- Protects your home or shed in high wind regions - even cyclones
- Independently tested to AS/NZS 4505: 2012 for C1 & C2 regions

designed to *glide*™



Safeguard your Home or Shed in High Wind Conditions

Cyclone Rated Windlocked Roller Door

Gliderol's Storm•Safe™ Roller Door has been uniquely designed using patented Guide-Lok™ technology to provide homes in cyclone and storm prone regions with the ultimate in safety and durability.

Designed in Australia and locally manufactured, the Gliderol Storm•Safe™ Roller Door is engineered to withstand Australia's harshest weather conditions. The sleek and innovative design adds extra protection when extreme pressure is applied.

Gliderol's independently tested patented Guide Lok™ technology integrates the function of windlock clips into the door curtain itself and eliminates unnecessary hardware, providing maximum strength and minimal fatigue over the door's lifetime.

Complemented by 60mm deep aluminium guides, each capped with a custom designed nylon infeed, Storm•Safe's™ door hardware is both corrosion resistant and neater in appearance.

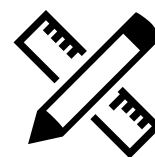
With state-of-the-art technology, you can be confident Gliderol's Storm•Safe™ Roller Door will safeguard your home or shed, keeping your family and your property protected.

Guide-Lok™

Patented Guide-Lok™
safety technology



Enhanced security
of your assets



Simplicity in design with
maximised durability



Hard-wearing
& high performance



Independently tested
to AS/NZS 4505:2012

Colorbond®

Available in a wide range
of Colorbond® steel colours



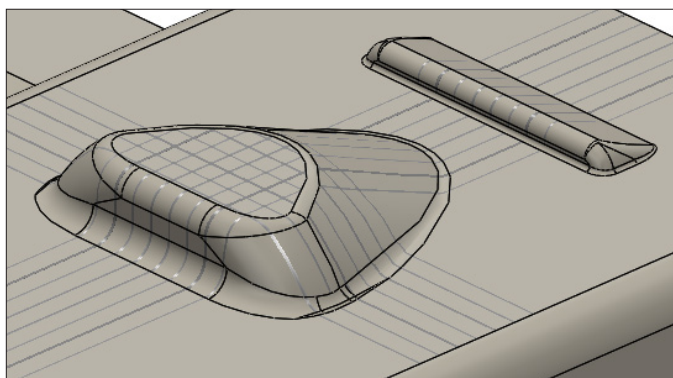
A Guide-Lok™ Nylon Infeed

Self lubricating nylon infeed fitted to the top of each aluminium guide facilitates proper curtain-to-guide lead-in, ensuring smooth operation every time.



B Guide-Lok™ Interlocking Curtain Recesses

Storm•Safe™ Roller Door curtain features interlocking recesses on both ends of each flute. This patented system eliminates the need for cumbersome clips and hardware, resulting in a lighter, more reliable door that is easier to install and maintain.



C Guide-Lok™ Aluminium Guides

Custom designed aluminium windlock guides provide increased strength, durability and rust resistance - particularly in coastal areas. Brushed aluminium finish improves on the aesthetics of traditional Roller Door hardware to provide a neater finish.



Gliderol Storm•Safe™

Make it Glide

Motor & Remote Control Options

Glidermatic® GRD & Dual Openers

- Heavy Duty suits residential roller doors up to 12m²
- Dual-motor GRD+ suits all roller doors up to 16m²
- Easy to use wall mounted control box
- Energy efficient unit with LED lighting
- Electronic limits with soft start/soft stop
- Safety auto reverse



Glidermatic® Heavy Duty GRD+ or Glidermatic® GRD+ Dual



Glidermatic® GRD+ Control Box
A wall mounted control box



2 x Remotes Supplied

Rollamatic GEN II Opener

- Suits residential roller doors up to 16m²
- Slip on unit with minimum sideroom of 120mm
- Gen II suits all roller doors up to 16m²
- Slim-line opener with digital display
- Energy efficient unit with LED lighting
- Electronic limits with soft start/soft stop
- Safety auto reverse



Rollamatic GEN II with Digital Display



3 x Remotes Supplied

Glidermatic IGDU Commercial Roller Door Opener

- Suits industrial & shed roller doors of any size
- Commercial roller door operator with built in chain drive for manual operation
- With safety overload & auto reverse & a control box with up/down/stop
- Optional upgrade handsets & safety PE beams available

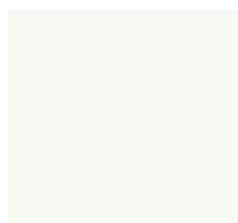


IGDU Control Box

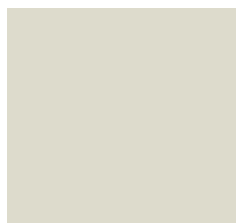
Maximum Door Width for C1 & C2 Wind Classification

Wind Classification	Ultimate Design Wind Pressure (kPa)		Max Door Width	Max Force Fx	Max Force Fy
	Inward	Outward			
C1 & C2	2.92	-3.37	5220mm	28.87 kN/m	7.75 kN/m

Storm•Safe™ Series Colour Range



Dover White*



Surfmist*



Evening Haze*



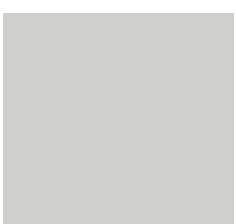
Classic Cream*



Paperbark*



Dune*



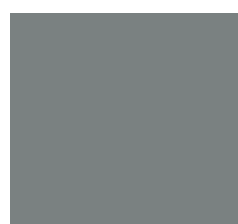
Southerly*



Shale Grey*



Bluegum*



Windspray*



Gully*



Jasper*



Wallaby*



Basalt*



Woodland Grey*



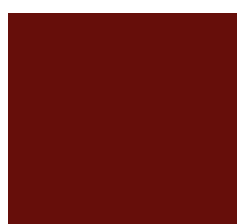
Monument*



Ironstone*



Deep Ocean*



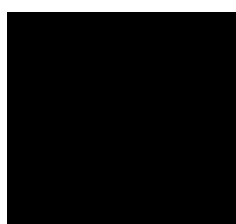
Manor Red*



Pale Eucalypt*



Cottage Green*



Night Sky*



Zincalume*
(only available for Roller Doors)

Proud Supplier of

Colorbond®

The COLORBOND® steel colours shown here have been reproduced to represent actual product colours as accurately as possible. However, we recommend checking your chosen colour against an actual sample of the product before purchasing as varying light conditions and limitations of the printing process may affect colour tones. COLORBOND®, BlueScope and colour names are registered trade marks of BlueScope Steel Limited.™ colour names are trademarks of BlueScope Steel Limited. COLORBOND®, BlueScope and * colour names are registered trade marks and™ colour names are trade marks of BlueScope Steel Limited. © 2024 BlueScope Steel Limited. ABN 16 000 011 058. All rights reserved.



Durable design



Customised to your needs



Solutions for all budgets



Locally manufactured in Australia

**Call your local Gliderol Office
on 1300 799 144**

Or email us at sales@gliderol.com.au

www.gliderol.com.au

